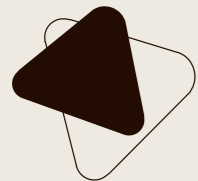




WEL Communications

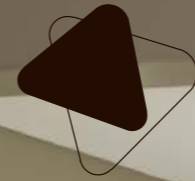
HAEVOET NV
L. BEKAERTSTRAAT 8, 8770 INGELMUNSTER, BELGIUM
T +32 (0) 51 48 66 95 F +32 (0) 51 48 73 19
INFO@HAEVOET.BE WWW.HAEVOET.BE

HOSPITAL - NURSING HOME FURNITURE



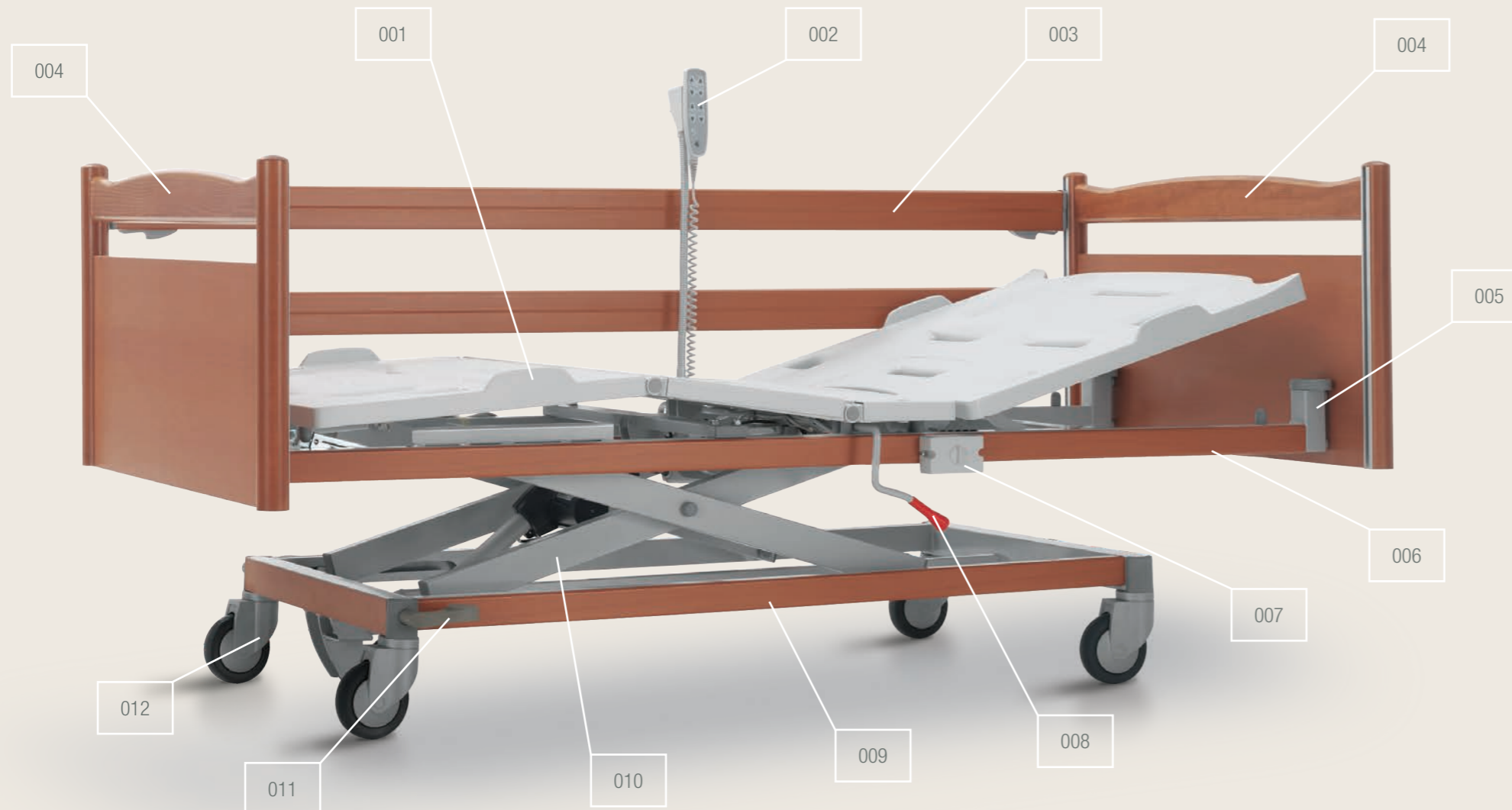
Artena Care

by Haelvoet



Artena

elegant certainty



001	Mattress platform • For a comfortable lying position
	You can choose between 2 different mattress platforms. The Artena bed is standard equipped with well-ventilating metal mattress platform profiles. The optional synthetic mattress platform sections (*) can be easily removed and cleaned.
002	Hand switch • Easy to use autonomously
	Functional and easy to operate manually. The hand switch is equipped with all functions to put the resident in his desired seating, lying or reading position.
003	Sideguards (*) • Safety has no price
	The Atmosphere sideguards protect the patient over 2/3 of the bed length, whereas the Pollux and Trix sideguards offer protection over the entire length.
004	Bed panels • Tasteful design
	The head and foot panels are available in four different versions with stylish wood designs.
005	Cases • Optimal care
	Two cases at the head end can be used to install an IV rod, a lifting pole or other accessories. Thanks to this, the bed can be equipped in accordance with the user's needs.
006	Wooden surrounds of the mattress platform frame (*) • An extra trump
	The wooden surrounds on the mattress platform frame give the bed a homely look.
007	Total lock device (*) • Verifiable certainty
	The total lock device makes it possible to switch off the electric bed functions with one single turn button.
008	CPR lever (*) • Central and within reach
	This lever is installed within your reach on both sides of the bed. Thanks to the CPR lever, you can manually put the backrest in a horizontal position.
009	Wooden surrounds of the carriage (*) • The finishing touch
	A wooden frame completes the carriage and improves the visual elegance of the bed.
010	High/low system • Highly stable
	The high/low supports guarantee excellent bed stability at all heights. The bed can be easily adjusted between 37 cm and 82,5 cm (with castors ø 125 mm), which makes it easier to get in and out of the bed or to treat a resident.
011	Central brake (*) • Activated with one single movement
	The castors can be centrally braked by means of a pedal within easy reach. This simplifies the use of the Artena bed by the nursing staff.
012	Castors • Superb maneuverability
	Our extensive gamut of high-quality design castors guarantees a highly mobile and maneuverable bed.

Haelvoet nv
Edition 2010
Haelvoet reserves the right to modify the product.
Small colour deviations are possible.

* option for Artena Care

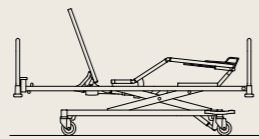


Comfort for everyone

Nowadays, both the resident and nursing staff demand comfortable and ergonomic beds. Only then, the resident can be as autonomous as possible, whereas the nursing staff can work efficiently.

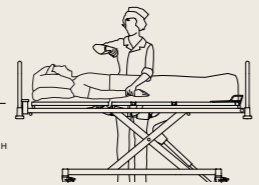
- **Hand switch**

The hand switch is user-friendly and easy to operate. It is equipped with clear and recognizable push buttons:



Seating or relax position

Both the backrest and knee rest are inclined simultaneously. The seating position is the best position in case of intestinal complaints or respiratory problems. This position is also recommended when the resident wants to eat, drink or read.



High position

The highest position of the bed is 82,5 cm (with castors \varnothing 125 mm). The resident can be looked after or treated without straining your back.



Low or sleeping position

The ideal sleeping position has been programmed in one single push button. When activated, the bed is put in its lowest position, whereas the backrest and knee rest are put in a horizontal position. This low bed position of 37 cm (36 cm with hidden castors) makes it easier to get in and out of the bed and reduces the risk of falling.

- **Total lock device**

Next to the standard hand switch, you can also opt for a total lock device that is in-stalled on the side of the bed. The total lock device (*) blocks all electric hand switch functions by means of one single turn button.



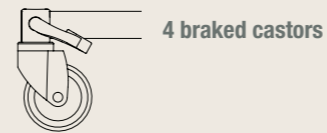
001

Mobile and flexible

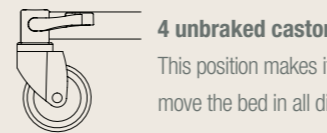
The daily use is made more comfortable, thanks to an easily movable and manoeuvrable bed.

- **Central brake**

The foot of the Artena bed is equipped with a design brake pedal (*) on both sides of the bed. The pedal activates the 4 castors simultaneously, and can be put in 3 different positions.



4 braked castors



4 unbraked castors

This position makes it possible to move the bed in all directions.



1 fixed directional castor

This castor makes it easier to move the bed in a straight line.



003

- **Bed extension**

A nursing bed has to fulfil everybody's wishes, irrespective of the resident's length. The integrated bed extension makes it possible to extend the bed with 20 cm.

Two different methods are possible to extend the bed. You can choose between a telescopic bed extension combined with the extendible Trix sideguards or a permanent bed extension (of 10 or 20 cm) when using the long Pollux sideguards.

When combined with the optional foot extension (*), a complete mattress platform functionality is guaranteed.



002

User-friendly



004

- **Easy to clean**

The standard rounded steel mattress platform profiles guarantee good ventilation. The Artena bed is optionally available with removable perforated synthetic panels that have integrated mattress holders. These mattress platform sections can be cleaned very easily, thanks to their clever design and fluent removability.

- **Accessible for a patient lift**

All available lift aids can be perfectly used with the Artena Care.

001 Total lock device ().*

002 When the bed has been extended, the telescopic Trix sideguards () offer complete protection over the entire bed length.*

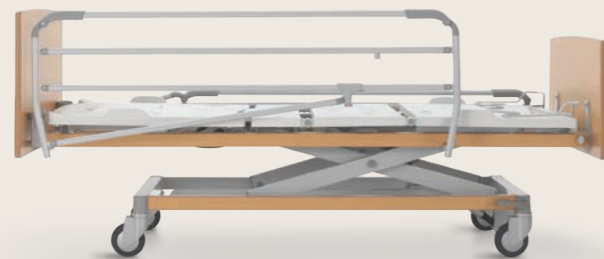
003 The single brake pedal is standard, in case the central brake mechanism () is chosen. The double brake pedal and the directional castor are optional.*

004 The perforated synthetic mattress platform sections () can be easily removed and cleaned.*

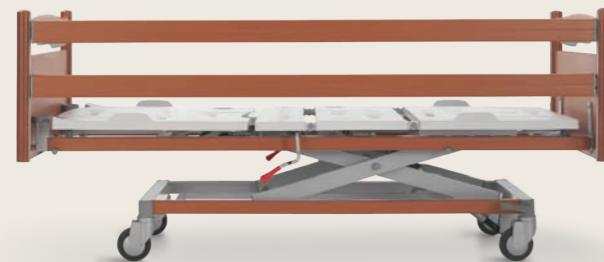
* option for Artena Care

Safety galore

Our different sideguards offer the resident complete safety in each bed position. Each type has its specific advantages for both the user and the resident. The choice is completely yours.



005



006



007

005 The Artena Care bed in nature varnish is equipped with **Atmosphere sideguards (*)** and a synthetic mattress platform (*) with standard Midea panels. The combination of Midea panels with a low foot panel is available on request.

006 The Artena Care bed in pear is equipped with **Pollux sideguards (*)**, a synthetic mattress platform (*), a CPR lever (*) and Hypnos panels (*).

007 The Artena Care bed in wengé is equipped with **Trix sideguards (*)**, a synthetic mattress platform (*), hidden castors (*) and Valentino panels (*).

008 When thicker anti-bedsore mattresses are used, an optional **4th siderail (*)** can offer 13 cm of extra protection. This protection is completely integrated in the Trix sideguards, so no additional accessories are required.

The Atmosphere sideguards (*) are one unit and can be lowered by means of an easy locking mechanism.




The Pollux sideguards (*) consist of 2 strong wooden siderails. A guaranteed distance between the two siderails makes sure that the Pollux sideguards comply with the strictest norms. The sideguards can only be lowered by using your both hands. This safety system has been developed to prevent the sideguards from being lowered unintentionally.

The Trix sideguards (*) consist of 3 siderails, offering maximum safety over the entire bed length. An integrated telescopic system makes sure that the Trix sideguards – even when the bed is extended – cover the bed sides over the entire length.

* option for Artena Care

Accessories

The accessories we offer can be harmoniously connected with the existing cases and accessory holders. Haelvoet strongly pays attention to this, so that the accessories offer you the same top quality as our nursing beds. After all, only the best materials are good enough for you.

<p>001 Lifting pole</p>  <p>The lifting pole is made of a bent thick-walled steel tube. It is equipped with a handle and a ribbon that can be manually adjusted. An automatic roll-up system is optionally available as well.</p>	<p>006 IV rod</p>  <p>The IV rod consists of a fixed and a height-adjustable part. The latter is equipped with four hooks. The IV rod is also available in a non-adjustable version with 2 hooks.</p>
<p>002 IV holder for lifting pole</p>  <p>The IV holder has 4 hooks and can be easily installed on the lifting pole.</p>	<p>007 Flexible hand switch holder</p>  <p>The flexible hand switch holder makes sure that the hand switch is within the reach of both the resident and the nursing staff.</p>
<p>003 Dinner tray for sideguards</p>  <p>The wooden dinner tray can be installed on all sideguard types. It can be easily hung onto the foot panel.</p>	<p>008 Raising aid</p>  <p>The ergonomic raising aid offers the resident optimal support when getting in and out of the bed.</p>
<p>004 Accessory bracket</p>  <p>The accessory bracket can be used in case of specific customer needs. The bracket is equipped with 4 hooks and has a length of 310 mm. It is put in the optional accessory hooks.</p>	<p>009 Urine bottle holder</p>  <p>The urine bottle holder is installed in the 2 synthetic accessory hooks that are optional for the Artena bed. You can choose between 2 models.</p>
<p>005 Bowl holder</p>  <p>Two bowls can be placed into the bowl holder. The holder is put in the optional accessory hooks.</p>	<p>010 Cover for sideguards</p>  <p>The removable cover is made of imitation leather and can be easily put around the sideguards. This cover is especially recommended to protect restless residents.</p>

Elegant design

Everybody cares about the health of residents. Personal independence and design play a key role in this concept. That's why the most modern techniques and a progressive functionality have been integrated in the elegant Artena bed design.

- Bed panels**

Our bed structure makes it possible to choose between 4 different panel types. Each panel is characterised by its clear lines and sharp eye for detail. Thanks to the absence of visible fastening bolts, the panels don't only have a stylish look, but they are also very easy to maintain and clean.



009 The matching colours, homelike materials and functional design improve the resident's health.

010 The hidden castors (*) give the Artena bed a homely look.



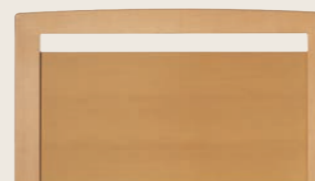
Type 1: The standard bed panel **Midea** has a modern look.



Type 2: The timeless bed panel **Hypnos (*)** can be easily integrated in various interiors, thanks to its round solid posts.



Type 3: The stylish bed panel **Felina (*)** is characterised by a slightly bent handle.



Type 4: The bed panel **Valentino (*)** is characterised by rigid lines.

- Finishing and quality**

A whole range of colours from our standard collection helps you to integrate this bed perfectly in your institution.



metallic
code RAL 9006 Alu

Melamine



melamine nature
code 925

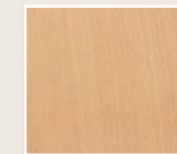


melamine pear
code 935

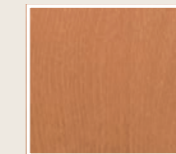
Solid wood and veneer (*)



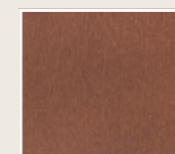
white varnish
code 41



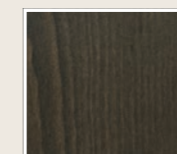
nature varnish
code 25



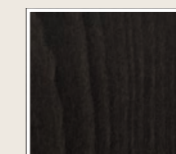
pear
code 135



nuts
code 120



dark grey
code 140



wengé
code 150

Stained colour samples are available on request.

Other solutions for your interior decoration are possible on request.

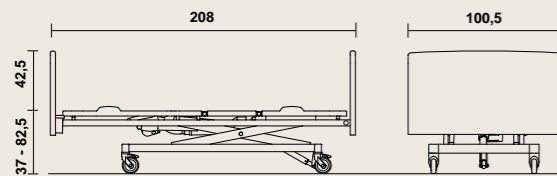


This PEFC certificate guarantees that Haelvoet uses wood of sustainably managed forests. A sustainable forest management is environmentally and economically viable, as well as socially beneficial. By buying our PEFC products, you contribute to the future of our environment.

Wood is a natural product. Small colour deviations are possible.

Artena Care Summary

• Dimensions and performances (standard bed)



- width: 100,5 cm, length: 208 cm;
- height variation of the mattress platform:
 - ± 37 cm* - ± 82,5 cm (with castors ø 125 mm),
 - ± 36 cm* - ± 81,5 cm (with hidden castors);
- safe working load: 200 kg;
- weight (without accessories): 120 kg;
- mattress dimensions: 195 x 85 cm, thickness: 12 to 15 cm.

* lowest bed position with quick release + 3,5 cm



Haelvoet makes sure that its excellent price-quality ratio is not at the expense of the environment. Our company considers durability – in all possible meanings – of paramount importance. All our products have a long lifespan and are delivered with a 10-year-guarantee on construction errors.



Choosing Haelvoet is choosing an honest product, thanks to our environment-friendly production processes, a maximum use of recyclable materials and our PEFC certificate.



The Artena Care nursing bed is made in accordance with ISO 9001:2015 and ISO 13485:2016 and complies with the European Medical Device Regulation EU 2017/745 and all other applicable European harmonised norms:

- EN 60601-1 Medical electrical equipment - Part 1: General requirements for safety.
- EN 60601-2-52 Medical electrical equipment - Part 2-52: Particular requirements for the basic safety and essential performance of medical beds.
- EN 60601-1-2 Medical electrical equipment - Part 1: General requirements for safety - section 2: Secondary norm: Electromagnetic compatibility, Requirements and tests.
- EN ISO 14971 Application of risk management to medical devices.

	Standard Artena Care		Options Artena Care			
MATTRESS PLATFORM						
	• 3-section steel mattress platform	• Telescopic bed extension up to 20 cm	• 4-section steel mattress platform	• 3-section mattress platform with removable synthetic sections	• 4-section mattress platform with removable synthetic sections	• Foot extension up to 20 cm
CASTORS						
	• Levina castors ø 125 mm, separate brakes		• Cover design castors ø 125 mm, central brake, with or without directional castor	• Cover design castors ø 150 mm, central brake, with or without directional castor	• Integral castors ø 150 mm, central brake, with or without directional castor	• Hidden twin castors ø 50 mm, with central brake
PANEL TYPE						
	• Midea panel (only with Atmosphere and Pollux sideguards)		• Hypnos panel	• Felina panel	• Valentino panel	• Bumpers (not on the Midea panel) • Wall spacer
SIDEGUARDS						
			• Atmosphere sideguards	• Pollux sideguards	• Trix sideguards	• Trix sideguards with a 4th siderail
CONTROLS						
	• Hand switch		• Total lock device (ACL)	• Manual quick release (CPR)		
EXTRAS						
			• Wooden surrounds of the carriage	• Wooden surrounds of the mattress platform frame	• 6 synthetic accessory hooks	• Battery